

innuos



ZENMINI Mk3 Quick Start Guide

Thank you for buying our ZENmini Music Server.

This quick start guide will show you how to get started with your new Music Server.

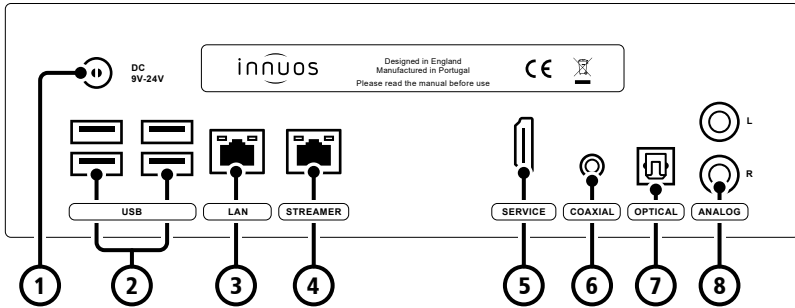
For more detailed information please read our innuOS manual innuos.com/en/go/innuos-manual

Should you have problems please contact support@innuos.com and we'll be happy to assist you.

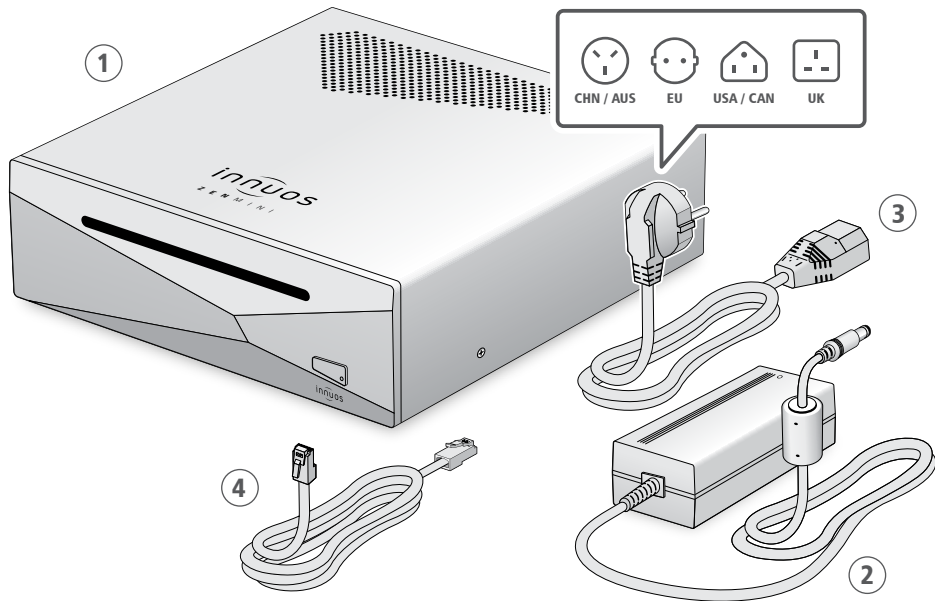


1	ZENmini Mk3 Rear Panel Diagram	3
2	Box Contents	4
3	Connect your ZENmini to mains power	5
4	Connect your ZENmini to your home network	6
5	Connect Network Audio Device to Streamer Port	7
6	Turn on your ZENmini	8
7	Update innuOS software to the latest version	9
8	Adding music to your ZENmini	10
9	Using your ZENmini as a Player	12
10	Connecting to a UPnP / DLNA system	16
11	Using Player Apps	17
12	Connecting to a Sonos system	20
13	Using your ZENmini with Roon	22
14	Turn off your ZENmini	24

1 ZENmini Mk3 Rear Panel Diagram

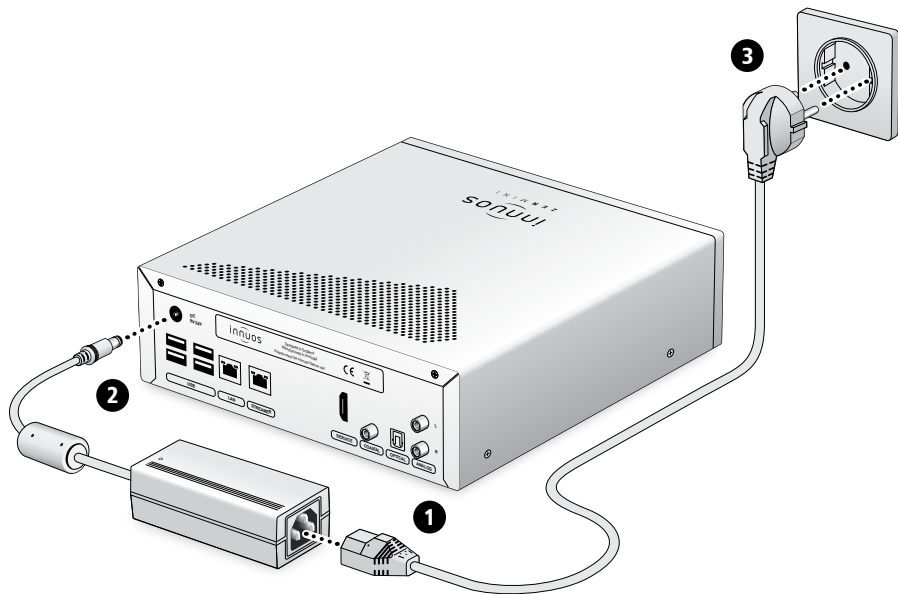


- | | | | |
|---|----------------------------|---|----------------------------|
| 1 | DC Power Connector | 5 | HDMI Output (Service Only) |
| 2 | 4 x USB 3.0 | 6 | Digital Coaxial Output |
| 3 | Ethernet Input from Router | 7 | Digital Optical Output |
| 4 | Ethernet Streamer Output | 8 | Analog RCA Output |

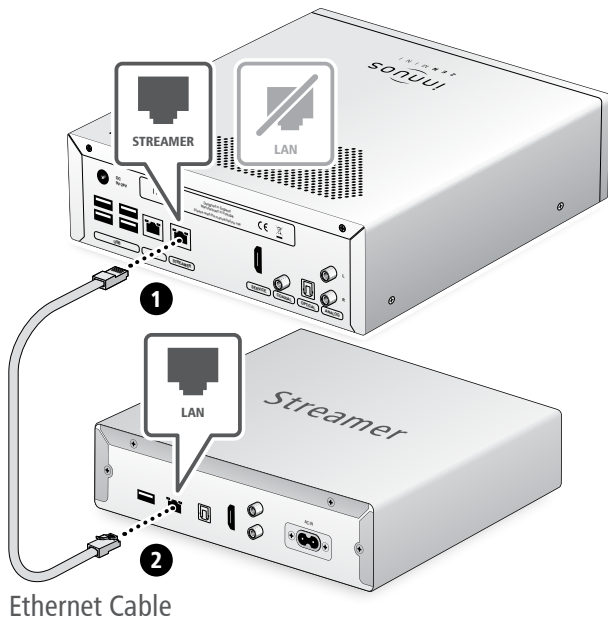


- ① Innuos ZENmini Mk3 Music Server
- ② AC/DC Power Adapter

- ③ Mains Cable
- ④ 2m Ethernet Cable

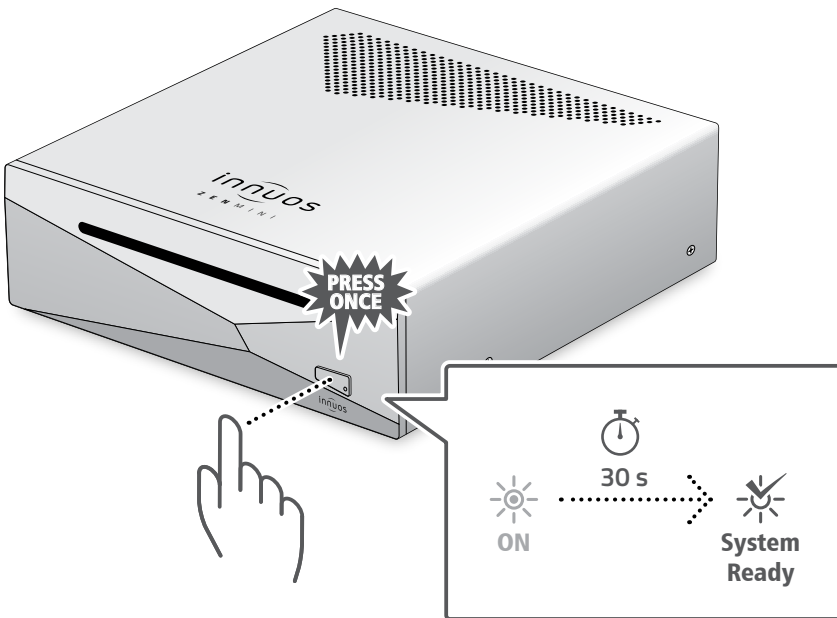


NOTE Optional - Not required for server operation



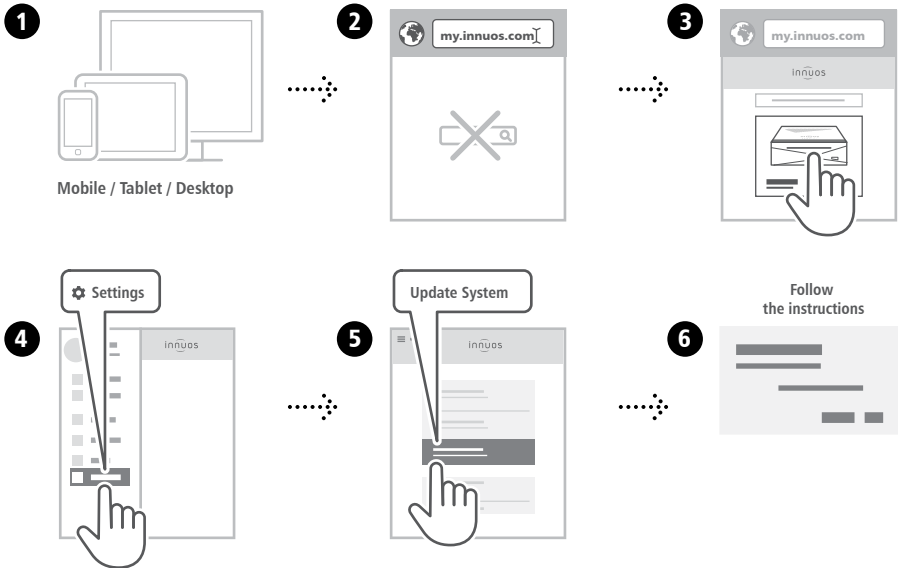
The Streamer Port provides a wired network connection for streamers, wireless speakers and other network audio products.



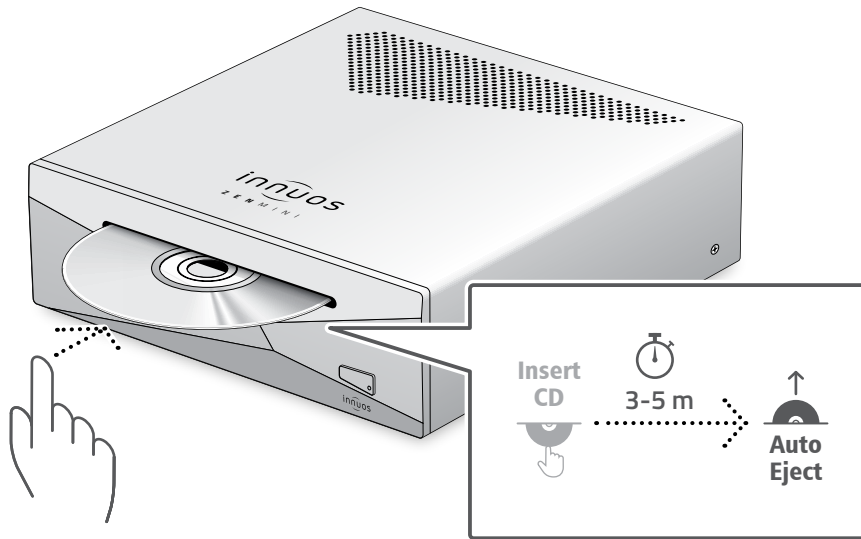


Please press and release. Do not hold the front power button down.

7 Update innuOS software to the latest version



OPTION A Rip CDs



Do not push the CD while it is being drawn in as this may cause it to jam or damage the optical drive.

OPTION B Import Digital Music

1



Mobile / Tablet / Desktop



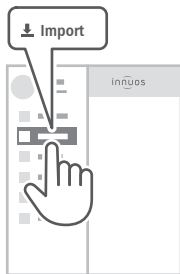
2



3



4



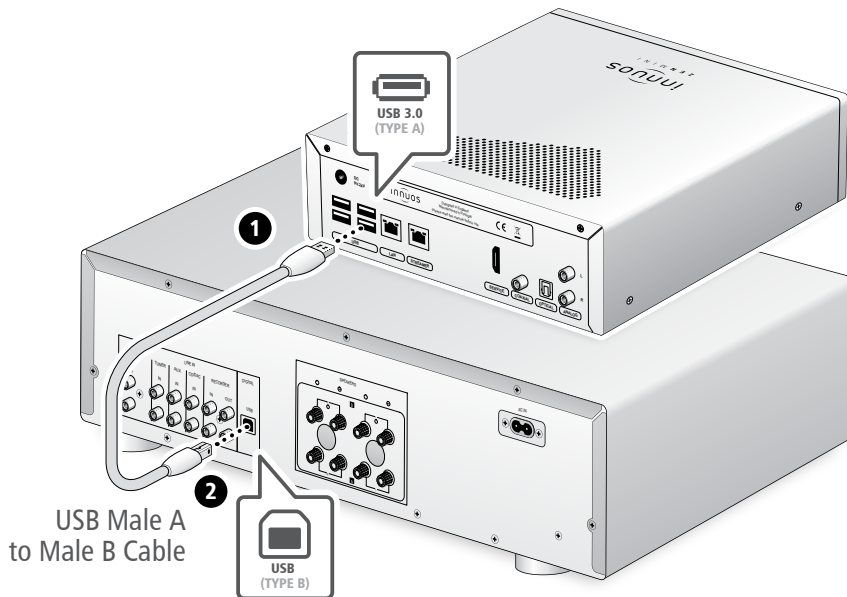
5



6

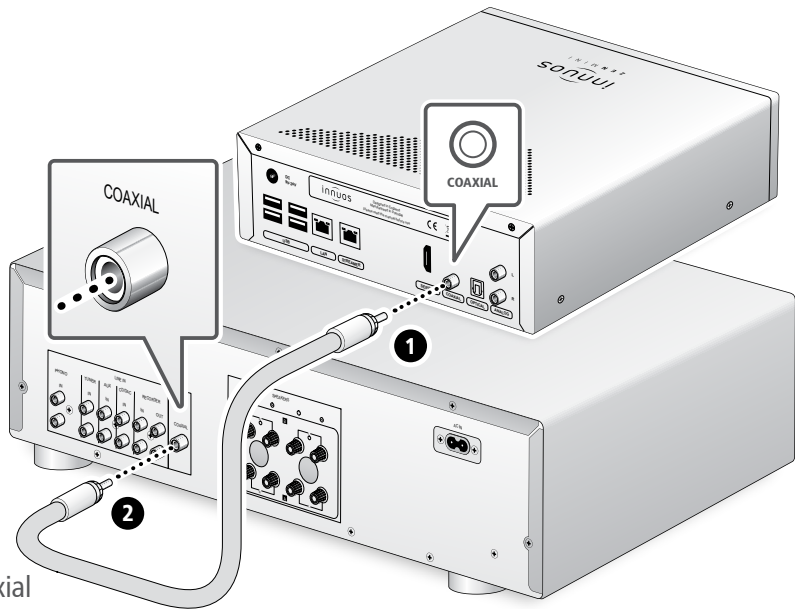


SETUP A Connect to a DAC/Amplifier via USB



Note: USB Cable not included. Requires DAC compatible with USB Audio Class 2.

SETUP B Connect to a DAC/Amplifier via Coaxial Cable

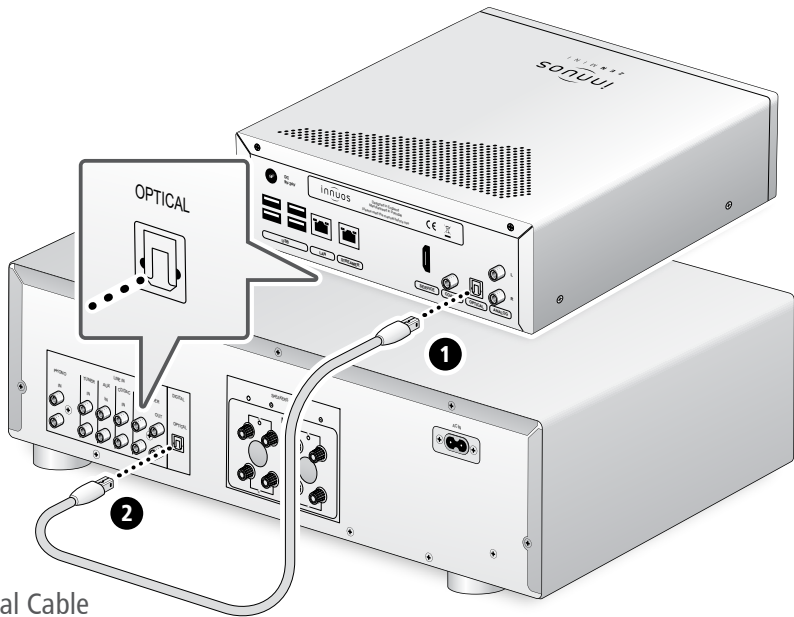


Coaxial Cable

Note: Coaxial Cable not included.



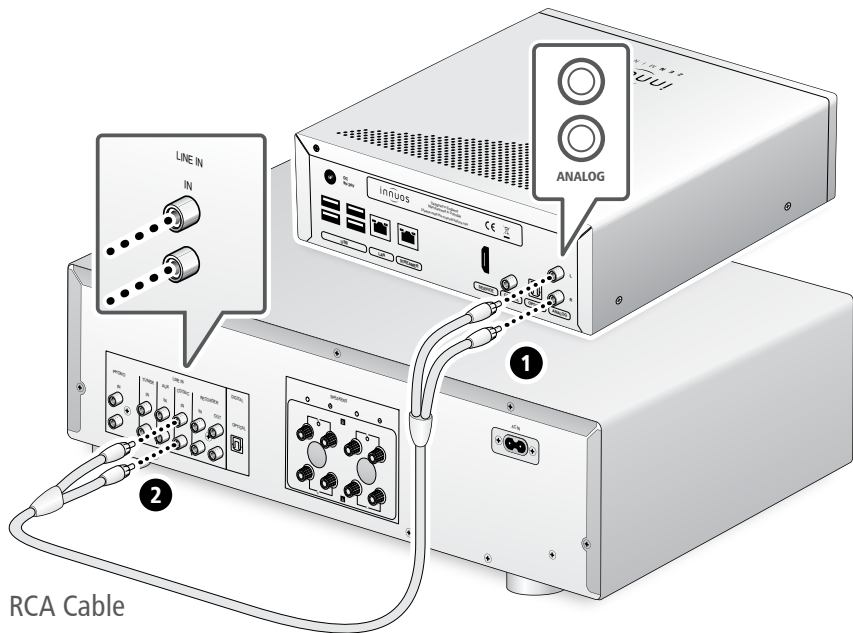
SETUP C Connect to a DAC/Amplifier via Optical Cable



Optical Cable

Note: Optical Cable not included.

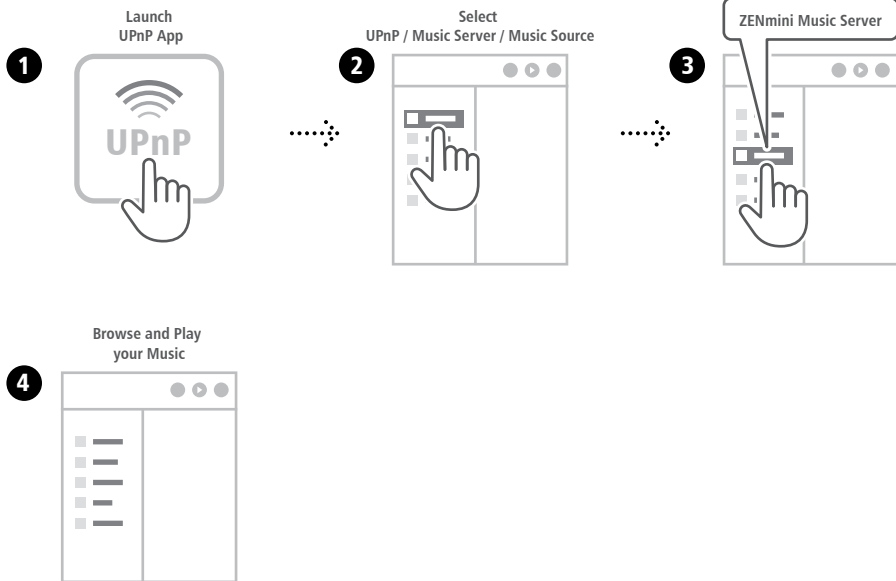
SETUP D Connect to Amplifier via Analog Cable



RCA Cable

Note: RCA Analog Cable not included.





The UPnP app is provided by the manufacturer of your streamer, ie. Bose, B&O, Naim, Bluesound, etc.

Recommended Remote Control App



iPhone / iPad / iPod Touch



Android / Kindle Fire



Windows 8 / 10



These control apps are to be used when the server is connected as a player by USB, Digital Coaxial, Digital Optical or Analog RCA.

1 Setup Streaming Services (Optional)

1



Mobile / Tablet / Desktop

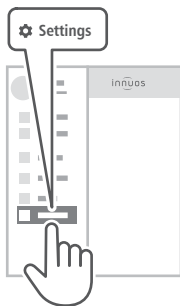
2



3



4



5



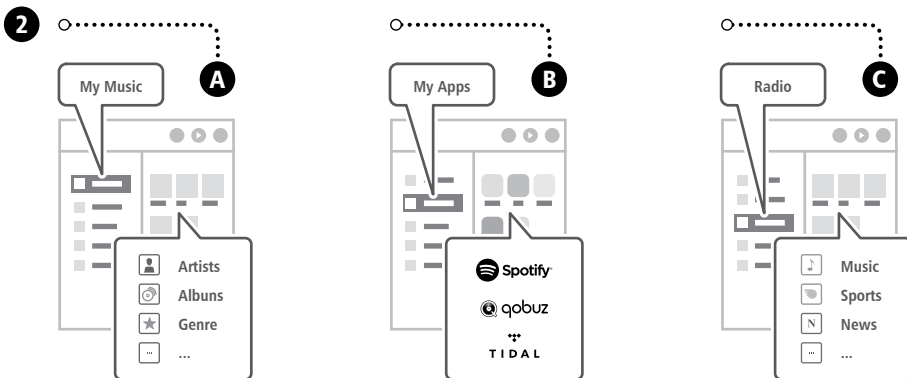
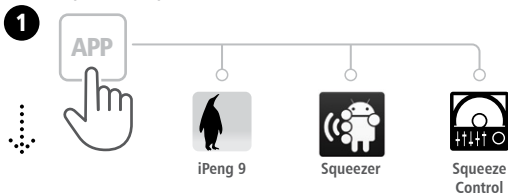
6



Streaming Apps require a premium account subscription.

2 Play your music

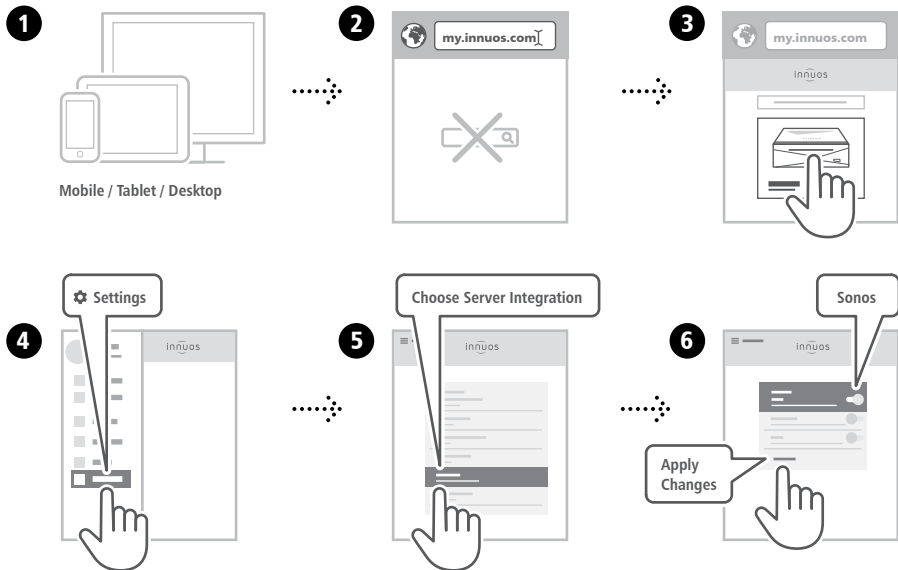
Launch your App (iPeng 9 / Squeezer / Squeeze Control)



If the server is not found, please contact us at support@innuos.com



1 Setup



2 Play

1

Launch Sonos
App (Android / iOS)

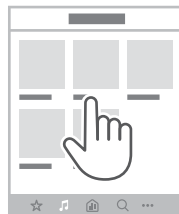


2



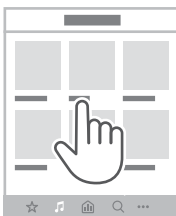
3

Browse by:
Artists / Albums / Genres / ...



4

Choose
the desired album

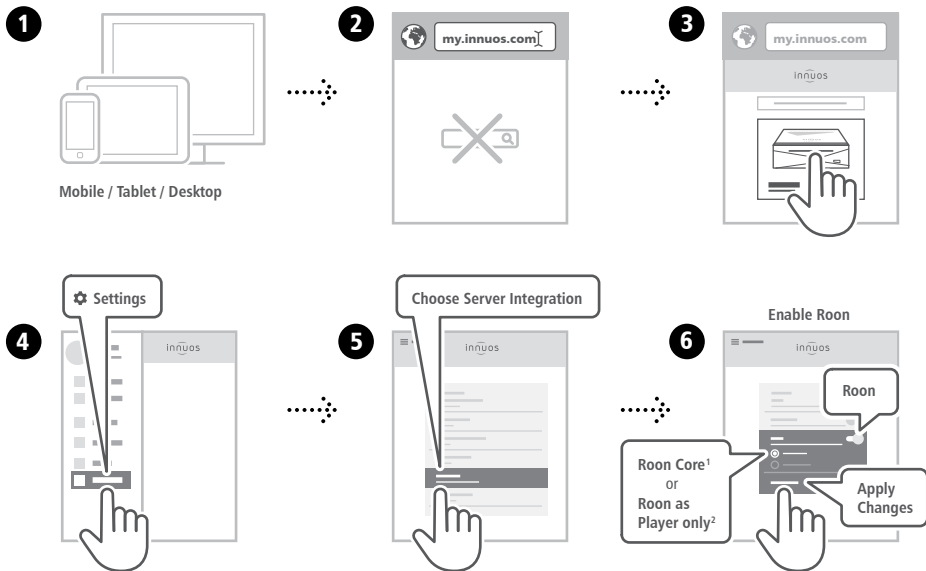


5

Play



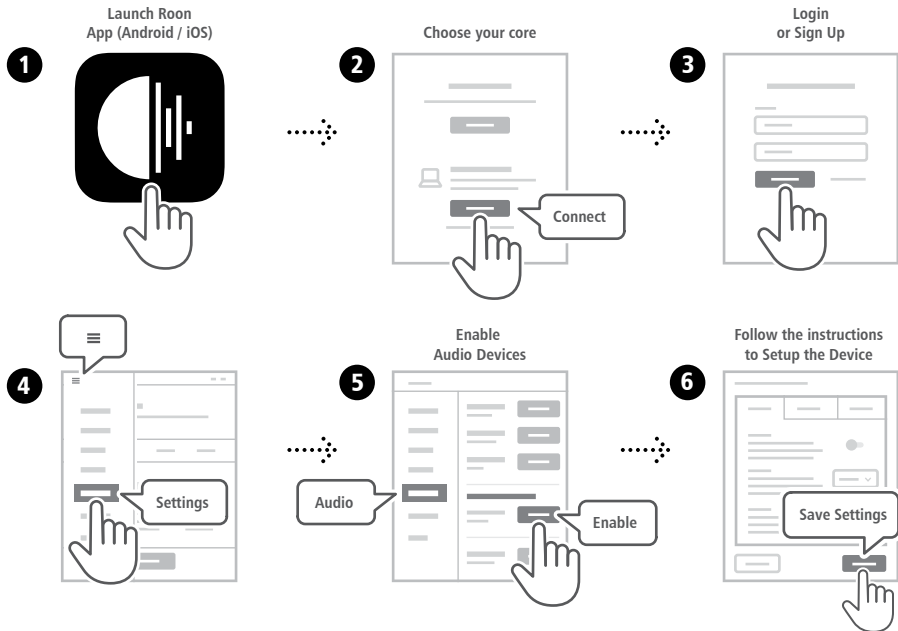
1 Enable Roon on innuOS

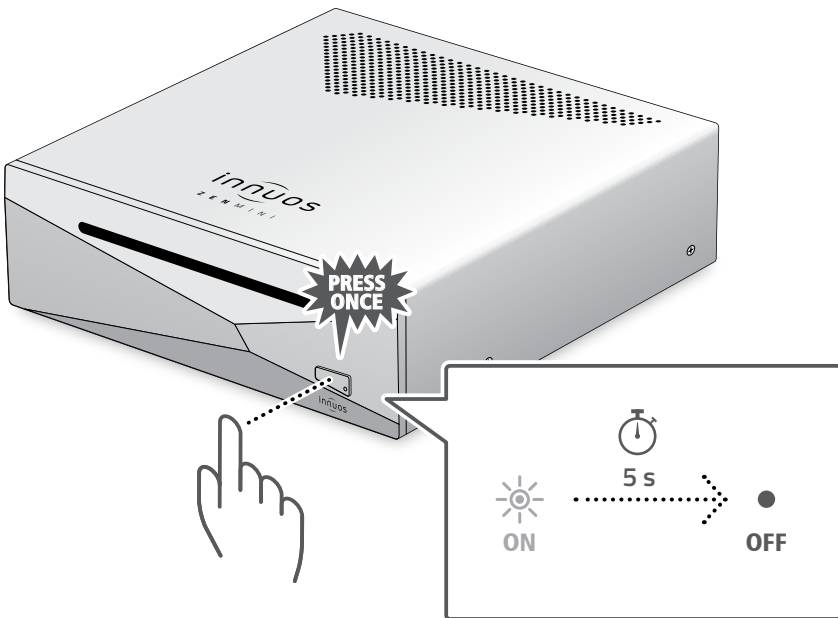


¹**Roon Core:** Select if you want to use this server as Roon Server and Player.

²**Roon as Player only:** Select if you are running Roon Core on another system.

2 Setup Roon Core

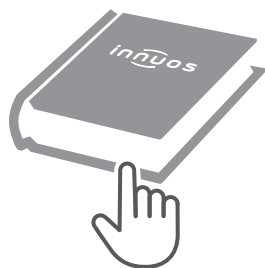




Please press and release. Do not hold the front power button down.

Notes: _____





For more information and for the latest version of this quick start guide please visit:

innuos.com/support